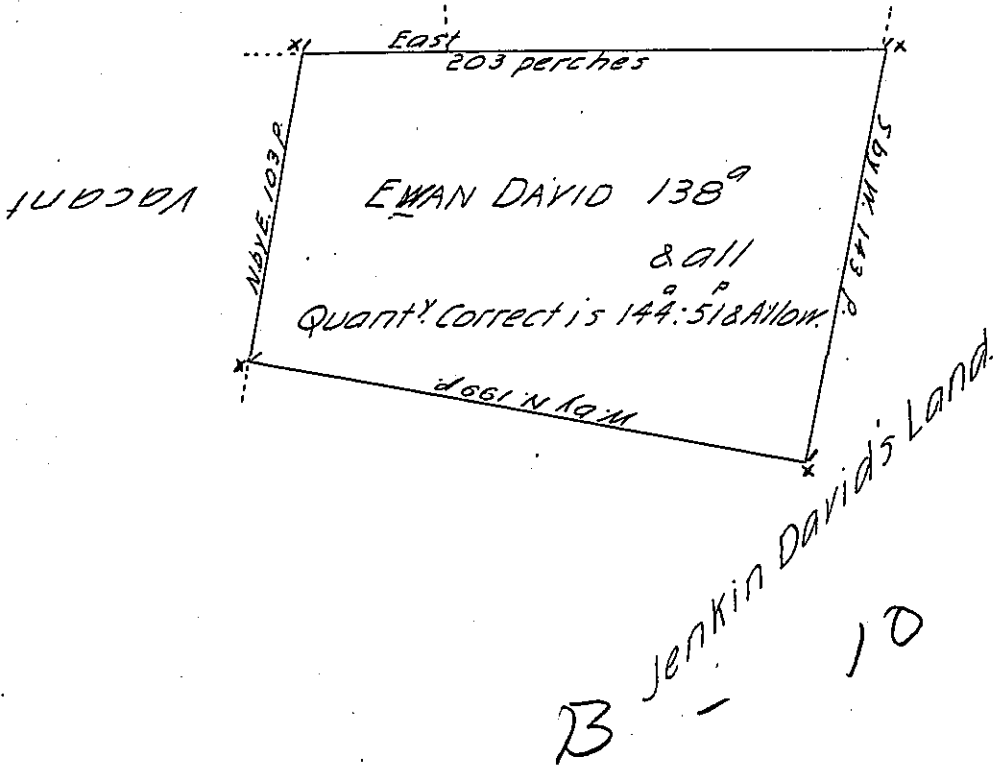


PHILIP SWEGER'S LAND  
 VACANT LAND  
 A-1-2579  
 A-50-88



By Virtue of a Warrant from the Proprietor Dated the the 17<sup>th</sup> Day of June 1738. The above Described Tract of Land Was Surveyed Unto Evan David in Erle Township in Lancaster County. Begining at a Post at a Corner of Jenkin David's Land Thence West by North by the Same 199 perches to a post Thence North by East by Vacant Land 103 perches to a post Thence East by the Land of Philip Sweger and Vacant Land 203 perches to a post in Jenkin David's Line Thence South by West on the Same 143 perches to y<sup>e</sup> place of Begining Containing One Hundred and Thirty Eight Acres Beside the Allowance of Six Cent 30<sup>th</sup> 1<sup>mo</sup> 1739 @ Sam' Lightfoot -

IN TESTIMONY that the above is a copy of the original remaining on file in the Department of Internal Affairs of Pennsylvania, made conformably to an Act of Assembly approved the 16th day of February, 1833, I have hereunto set my Hand and caused the Seal of said Department to be affixed at Harrisburg, this twenty-eighth day of May 1904.

*George P. Brown*  
 Secretary of Internal Affairs.